

TTA SERIES TRI-STATE TYPE



TTA

■ FEATURES

- With three state (1, open, 0) setting function, especially suitable for encoding/decoding of tri-state encoder/decoder integrated circuit to obtain more security codes than traditional two-state (1,0) operation. For instance, 9 bits with tri-state gets 19,683 (3^9) codes, while two-state has 512 (2^9) codes, gains 38 times more codes with a ECE tri-state DIP Switch.
- Bottom sealed to ensure free of flux immersion during wave soldering.
- All plastics are UL 94V-0 grade fire retardant.
- Gold plated contact to ensure low contact resistance and Tin plated terminals to prevent contamination during soldering.
- Twin contacts designed to ensure stable contact.
- Ideal for coding tele-communication, transceiving, remote control and burglar alarm systems which use integrated circuits with tri-state coding systems.
- RoHS Compliant

■ APPLICATIONS

- Numerical setting for computer terminal equipment
- Price setting for vending machines
- Programming for game machines
- Programming for industrial equipment and measuring instruments

■ SPECIFICATIONS

1.ELECTRICAL

● Contact rating	
switching	25mA, 24VDC
non-switching	100mA

TTA SERIES TRI-STATE TYPE

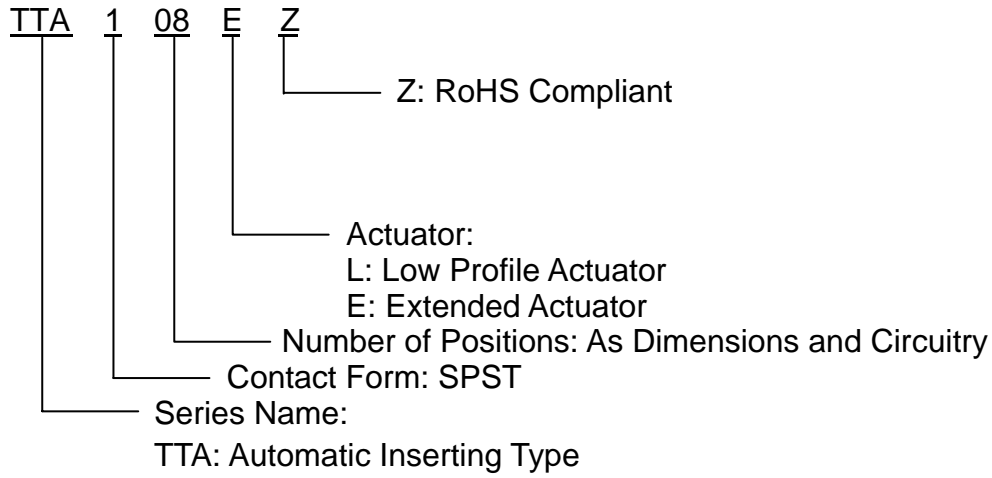
● Contact resistance	
initial	50mΩ Max.
after life test	100mΩ Max.
● Insulation resistance	1000MΩ Min. at 100VDC
● Dielectric strength	500VDC Min. for 60 seconds
● Capacitance between adjacent switches 5pF Max.	

2.MECHANICAL and ENVIRONMENTAL

● Temperature rating	operating	-25°C to +70°C
	storage	-40°C to +85°C
● Operation force		800g Max.
● Mechanical life		2000 operations
● Humidity		95% RH, 40°C for 96 Hrs.
● Vibration		10Hz-55Hz-10Hz for 6 Hrs.
● Solderability (for through hole type)		After flux 230±5°C for 5±0.5 seconds, 95% coverage
● Resistance to soldering heat (for through hole type)		260±5°C for 5±1 seconds.
● Reflow soldering heat for SMT type (reference only)		<p>The graph shows a reflow soldering temperature profile. The y-axis is Temperature (°C) with markers at 150, 180, 240, and Max. 260. The x-axis is Time (sec) with markers for 120-150 sec and 20 sec Max. The curve starts at 150°C, rises to a plateau at 180°C for 120-150 seconds, then rises to a peak at 240°C for 20 seconds maximum, and finally drops to 260°C.</p>

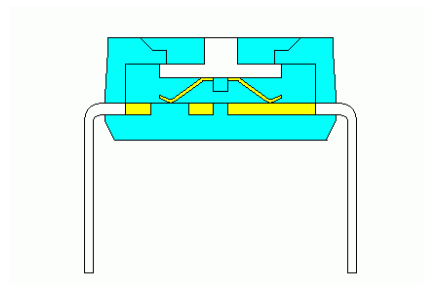
TTA SERIES TRI-STATE TYPE

■ PART NUMBERING SYSTEM



■ CONSTRUCTION

TTA



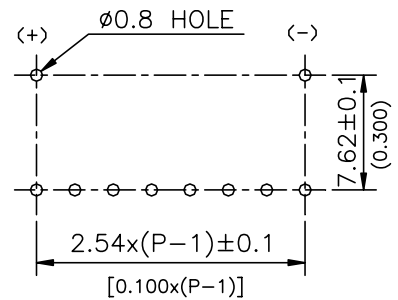
■ OPTIONS

1. Tape Sealed

TTA1xxxZ



2. Reverse P.C.B. LAYOUT available



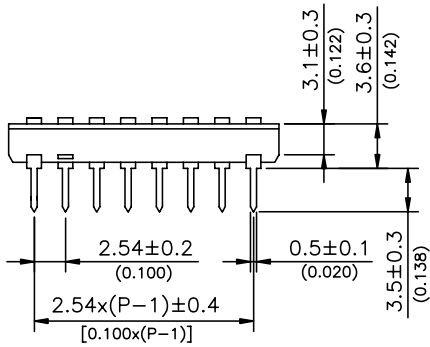
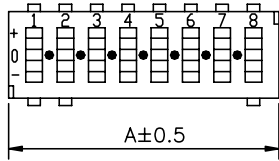
TTA SERIES TRI-STATE TYPE

DIMENSIONS AND CIRCUITRY

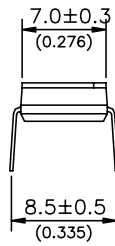
TTA SERIES

Dimension A UNIT: mm(inch)

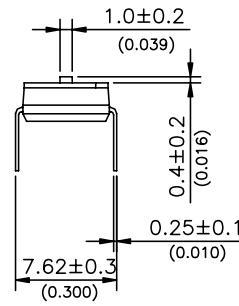
Positions	2	3	4	5	6	7	8	9	10	12
A	6.88 (0.263)	9.22 (0.363)	11.76 (0.463)	14.30 (0.563)	16.84 (0.663)	19.38 (0.763)	21.92 (0.863)	24.46 (0.963)	27.00 (1.063)	32.08 (1.263)



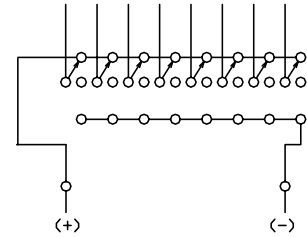
(L)TYPE



(E)TYPE



CIRCUIT DIAGRAM



P.C.B. LAYOUT
(TOP VIEW)

